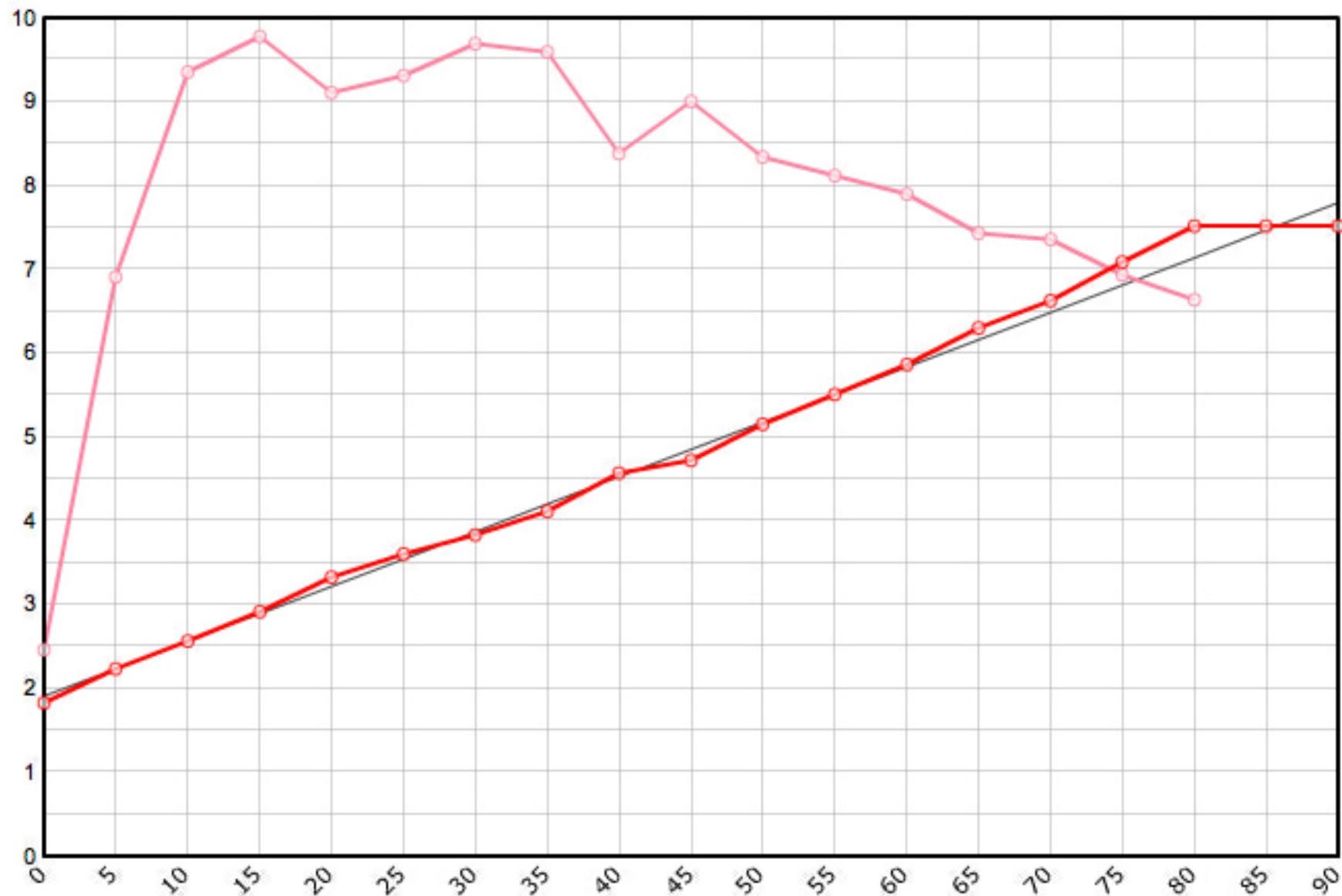


Rutenbauer	Modell	Rutenart	Bauart	Länge	Klasse	Teile	LWV	RAV	MP10%	MP60%	SM10%	SM60%	Info
Winston R. L.		Einhandrute	Solid Hex	7' 6"	5	2	0.075	0.257	9.0	54.0	2.4994	5.4407	✓

Schnurgewicht		Wurfdistanz		Spitzenring		Impactfaktor	Tip Impact	Hülse	Hülse 1		Hülse 2		Hülse 3		Bambusdichte		
0.00089	oz/inch	50	ft.	5/64"	0.01829	oz	4.000	2.206	oz	Standard	12/64"	0.225	oz		oz	0.668	oz/inch3



MP	Solid Hex	Taper	Diff.	Stress
0	0.072	1.829	0.000	49'263
5	0.088	2.235	0.406	138'184
10	0.101	2.565	0.330	187'116
15	0.115	2.921	0.356	195'617
20	0.131	3.327	0.406	182'111
25	0.142	3.607	0.279	186'198
30	0.151	3.835	0.229	193'815
35	0.162	4.115	0.279	191'870
40	0.180	4.572	0.457	167'658
45	0.186	4.724	0.152	180'141
50	0.203	5.156	0.432	166'859
55	0.217	5.512	0.356	162'424
60	0.231	5.867	0.356	157'955
65	0.248	6.299	0.432	148'638
70	0.261	6.629	0.330	147'224
75	0.279	7.087	0.457	138'660
80	0.296	7.518	0.432	132'775
85	0.296	7.518	0.000	
90	0.296	7.518	0.000	

