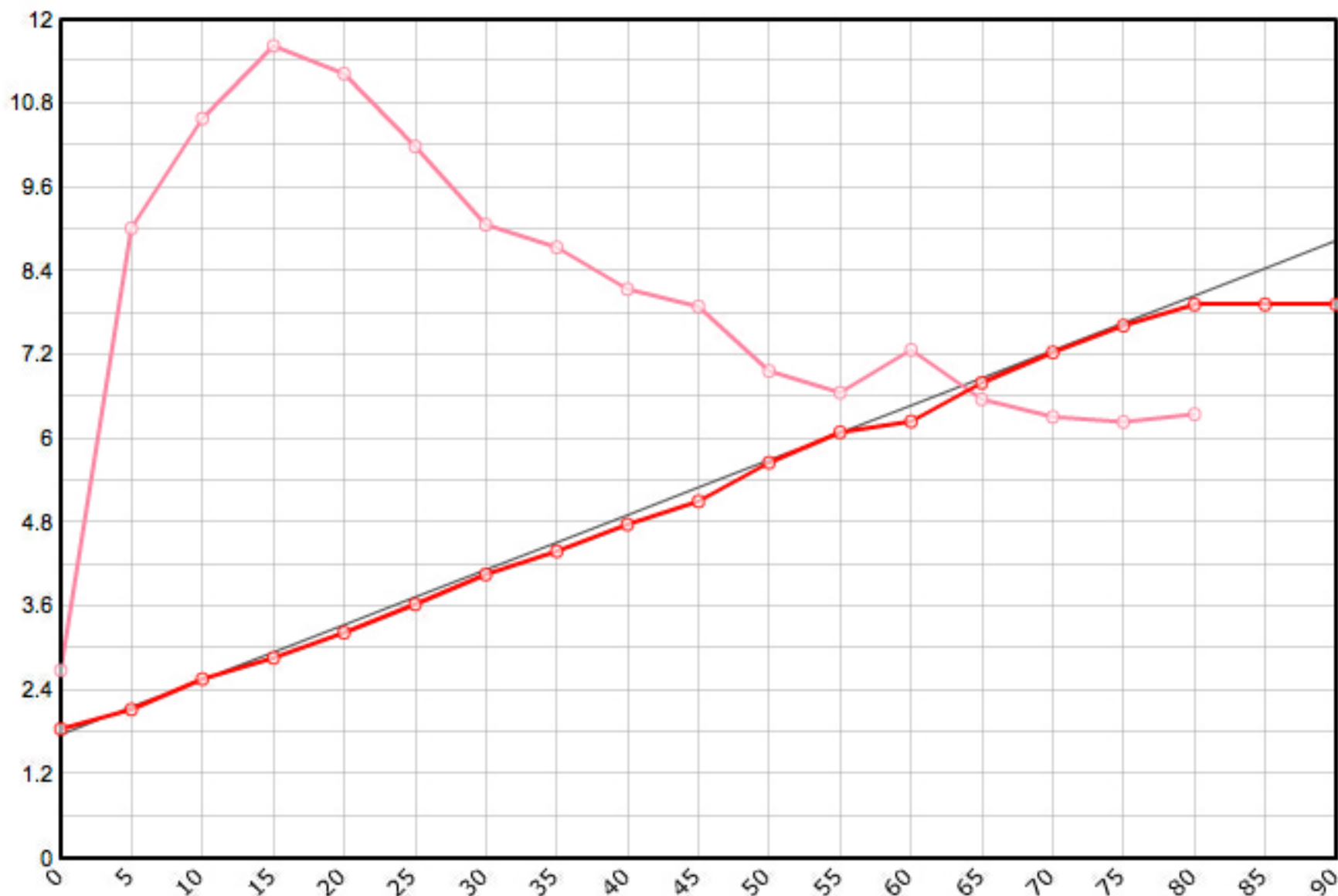


Rutenbauer	Modell	Rutenart	Bauart	Länge	Klasse	Teile	LWV	RAV	MP10%	MP60%	SM10%	SM60%	Info
Powell EC	7662	Einhandrute	Solid Hex	7' 6"	6	2	0.070	0.309	9.0	54.0	2.4790	6.0096	✓

Schnurgewicht		Wurfdistanz		Spitzenring		Impactfaktor	Tip Impact	Hülse	Hülse 1		Hülse 2		Hülse 3		Bambusdichte		
0.00102	oz/inch	50	ft.	5/64"	0.01829	oz	4.000	2.511	oz	Standard	13/64"	0.271	oz		oz	0.668	oz/inch3



MP	Solid Hex	Taper	Diff.	Stress
0	0.073	1.854	0.000	53'795
5	0.084	2.134	0.279	180'348
10	0.101	2.565	0.432	211'717
15	0.113	2.870	0.305	232'510
20	0.127	3.226	0.356	224'517
25	0.143	3.632	0.406	203'782
30	0.160	4.064	0.432	181'313
35	0.173	4.394	0.330	174'790
40	0.188	4.775	0.381	162'945
45	0.201	5.105	0.330	157'820
50	0.223	5.664	0.559	139'436
55	0.240	6.096	0.432	133'268
60	0.246	6.248	0.152	145'532
65	0.268	6.807	0.559	131'316
70	0.285	7.239	0.432	126'316
75	0.300	7.620	0.381	124'817
80	0.312	7.925	0.305	127'097
85	0.312	7.925	0.000	
90	0.312	7.925	0.000	

