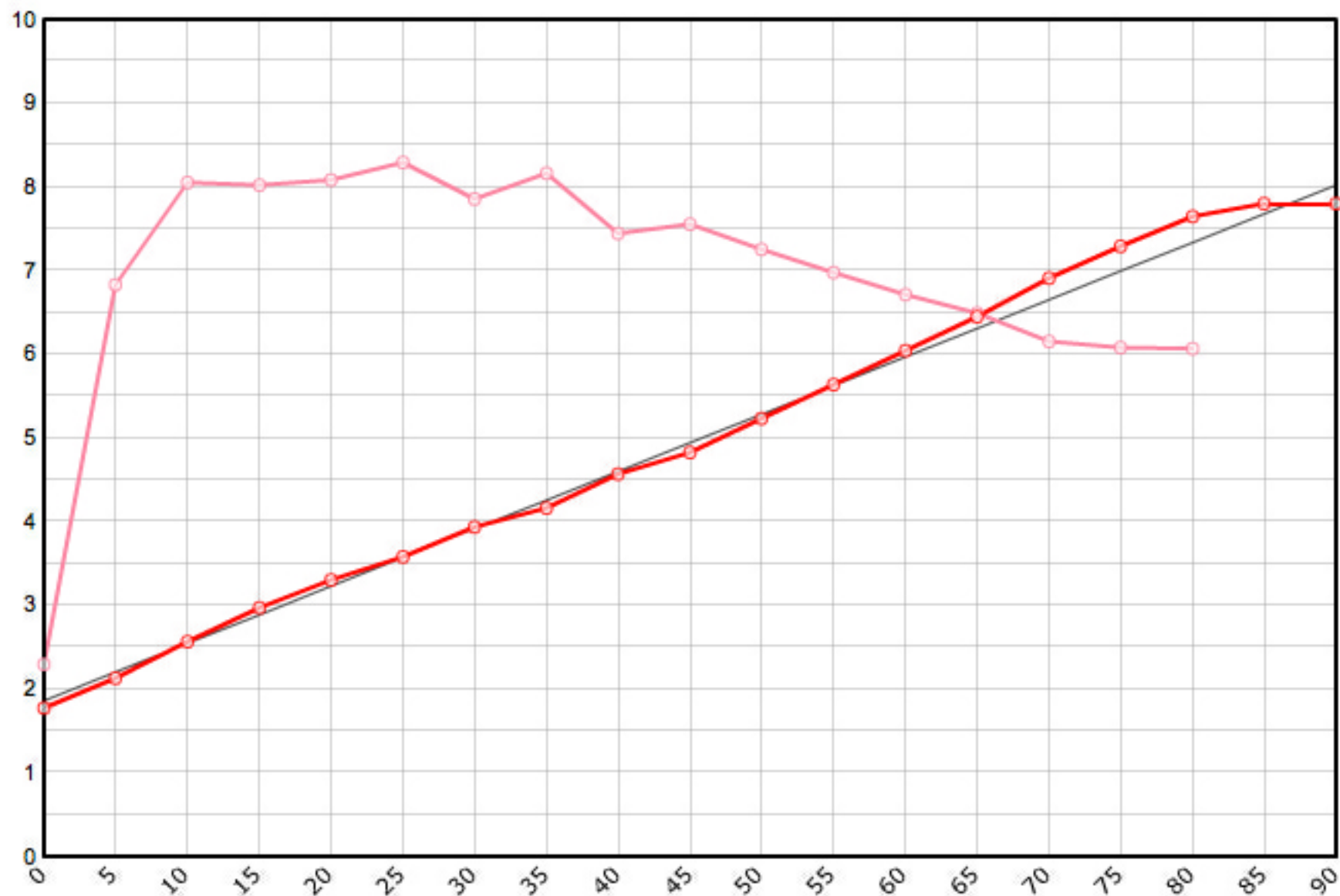


Rutenbauer	Modell	Rutenart	Bauart	Länge	Klasse	Teile	LWV	RAV	MP10%	MP60%	SM10%	SM60%	Info
Powell EC	7642	Einhandrute	Solid Hex	7' 6"	4	2	0.073	0.269	9.0	54.0	2.4790	5.5575	✓

Schnurgewicht		Wurfdistanz		Spitzenring		Impactfaktor	Tip Impact	Hülse	Hülse 1		Hülse 2		Hülse 3		Bambusdichte		
0.00076	oz/inch	50	ft.	4.5/64"	0.01600	oz	4.000	1.893	oz	Standard	13/64"	0.271	oz		oz	0.668	oz/inch <sup>3</sup>



MP	Solid Hex	Taper	Diff.	Stress
0	0.070	1.778	0.000	45'981
5	0.084	2.134	0.356	136'557
10	0.101	2.565	0.432	161'091
15	0.117	2.972	0.406	160'451
20	0.130	3.302	0.330	161'668
25	0.141	3.581	0.279	165'901
30	0.155	3.937	0.356	157'156
35	0.164	4.166	0.229	163'231
40	0.180	4.572	0.406	148'933
45	0.190	4.826	0.254	151'127
50	0.206	5.232	0.406	145'048
55	0.222	5.639	0.406	139'581
60	0.238	6.045	0.406	134'317
65	0.254	6.452	0.406	129'894
70	0.272	6.909	0.457	123'150
75	0.287	7.290	0.381	121'559
80	0.301	7.645	0.356	121'352
85	0.307	7.798	0.152	
90	0.307	7.798	0.000	

