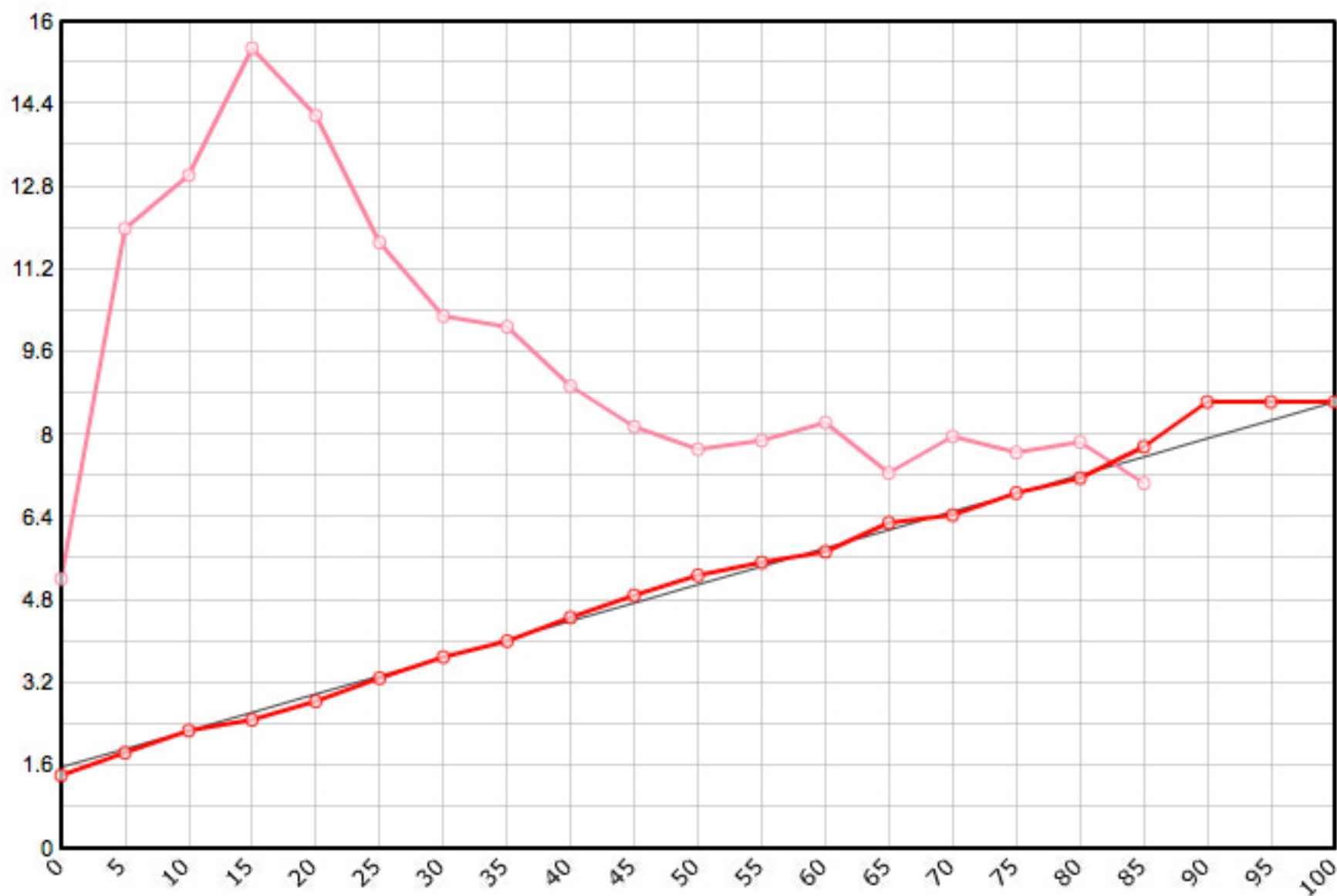


Rutenbauer	Modell	Rutenart	Bauart	Länge	Klasse	Teile	LWV	RAV	MP10%	MP60%	SM10%	SM60%	Info
Payne Jim	201	Einhandrute	Solid Hex	8 ' 0 "	5	3	0.062	0.278	9.6	57.6	2.2515	5.6429	✓

Schnurgewicht		Wurfdistanz		Spitzenring		Impactfaktor	Tip Impact	Hülse	Hülse 1		Hülse 2		Hülse 3		Bambusdichte					
0.00089	oz/inch	50	ft.	4/64"	0.01600	oz	4.000	2.197	oz	Standard	10/64"	0.162	oz	16/64"	0.397	oz		oz	0.668	oz/inch3



MP	Solid Hex	Taper	Diff.	Stress
0	0.056	1.422	0.000	104'268
5	0.073	1.854	0.432	239'740
10	0.090	2.286	0.432	260'438
15	0.098	2.489	0.203	309'609
20	0.112	2.845	0.356	283'587
25	0.130	3.302	0.457	234'517
30	0.146	3.708	0.406	205'942
35	0.158	4.013	0.305	201'871
40	0.176	4.470	0.457	178'898
45	0.193	4.902	0.432	163'218
50	0.208	5.283	0.381	154'476
55	0.218	5.537	0.254	157'810
60	0.226	5.740	0.203	164'892
65	0.248	6.299	0.559	145'360
70	0.254	6.452	0.152	159'497
75	0.271	6.883	0.432	153'352
80	0.282	7.163	0.279	157'247
85	0.306	7.772	0.610	141'347
90	0.340	8.636	0.864	
95	0.340	8.636	0.000	
100	0.340	8.636	0.000	

