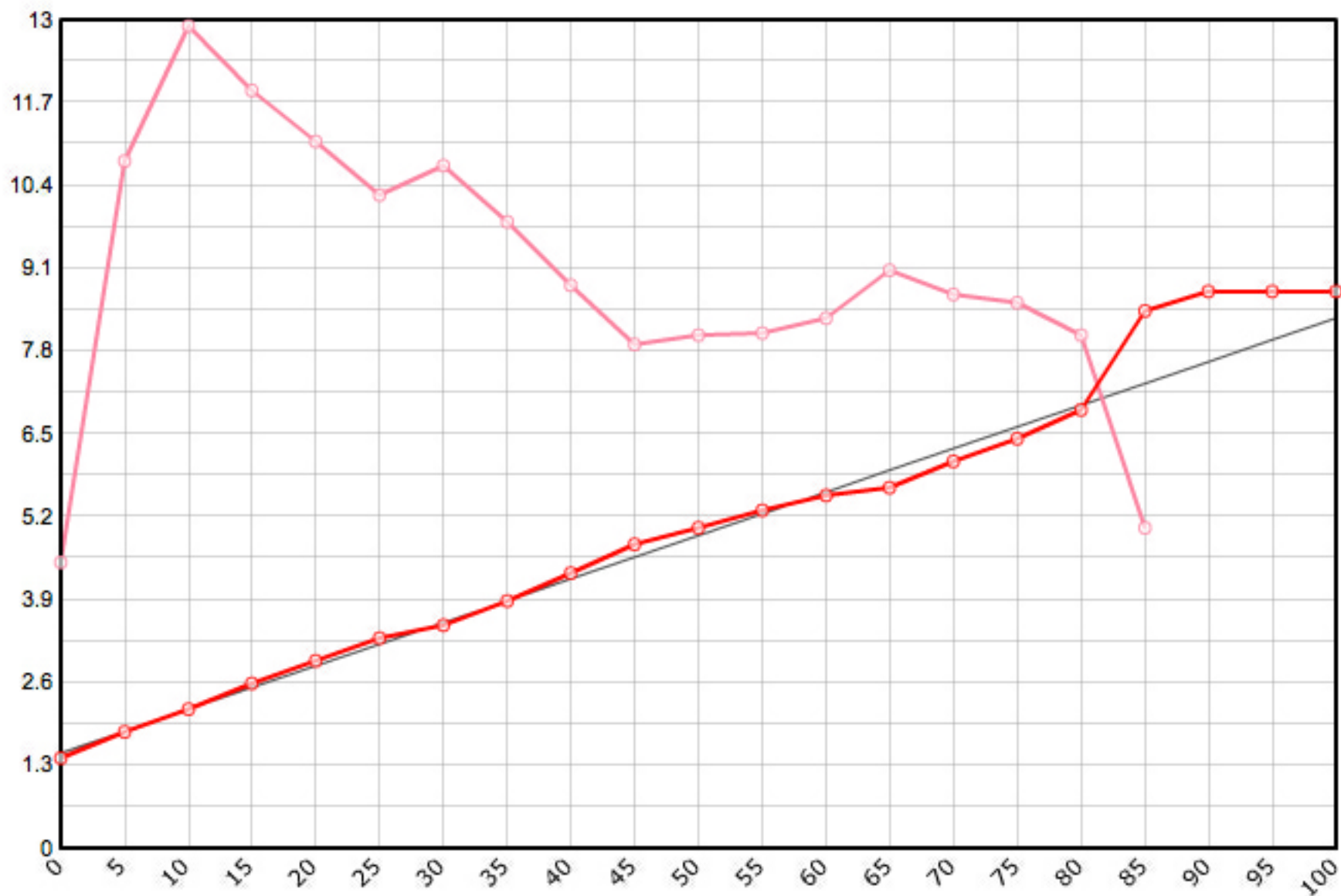


Rutenbauer	Modell	Rutenart	Bauart	Länge	Klasse	Teile	LWV	RAV	MP10%	MP60%	SM10%	SM60%	Info
Payne Jim	Nr. 200	Einhandrute	Solid Hex	8 ' 0 "	4	3	0.059	0.268	9.6	57.6	2.1560	5.4275	✓

Schnurgewicht		Wurfdistanz		Spitzenring		Impactfaktor	Tip Impact		Hülstentyp	Hülse 1		Hülse 2		Hülse 3		Bambusdichte		
0.00076	oz/inch	50	ft.	4/64"	0.01600	oz	4.000	1.893	oz	Standard	10/64"	0.162	oz	15/64"	0.358	oz	0.668	oz/inch3



MP	Solid Hex	Taper	Diff.	Stress
0	0.056	1.422	0.000	89'806
5	0.072	1.829	0.406	215'678
10	0.086	2.184	0.356	258'046
15	0.102	2.591	0.406	237'866
20	0.116	2.946	0.356	221'894
25	0.130	3.302	0.356	204'978
30	0.138	3.505	0.203	214'221
35	0.153	3.886	0.381	196'651
40	0.170	4.318	0.432	176'764
45	0.188	4.775	0.457	158'099
50	0.198	5.029	0.254	161'038
55	0.209	5.309	0.279	161'655
60	0.218	5.537	0.229	166'328
65	0.223	5.664	0.127	181'449
70	0.239	6.071	0.406	173'890
75	0.253	6.426	0.356	171'256
80	0.271	6.883	0.457	161'008
85	0.332	8.433	1.549	100'650
90	0.344	8.738	0.305	
95	0.344	8.738	0.000	
100	0.344	8.738	0.000	

