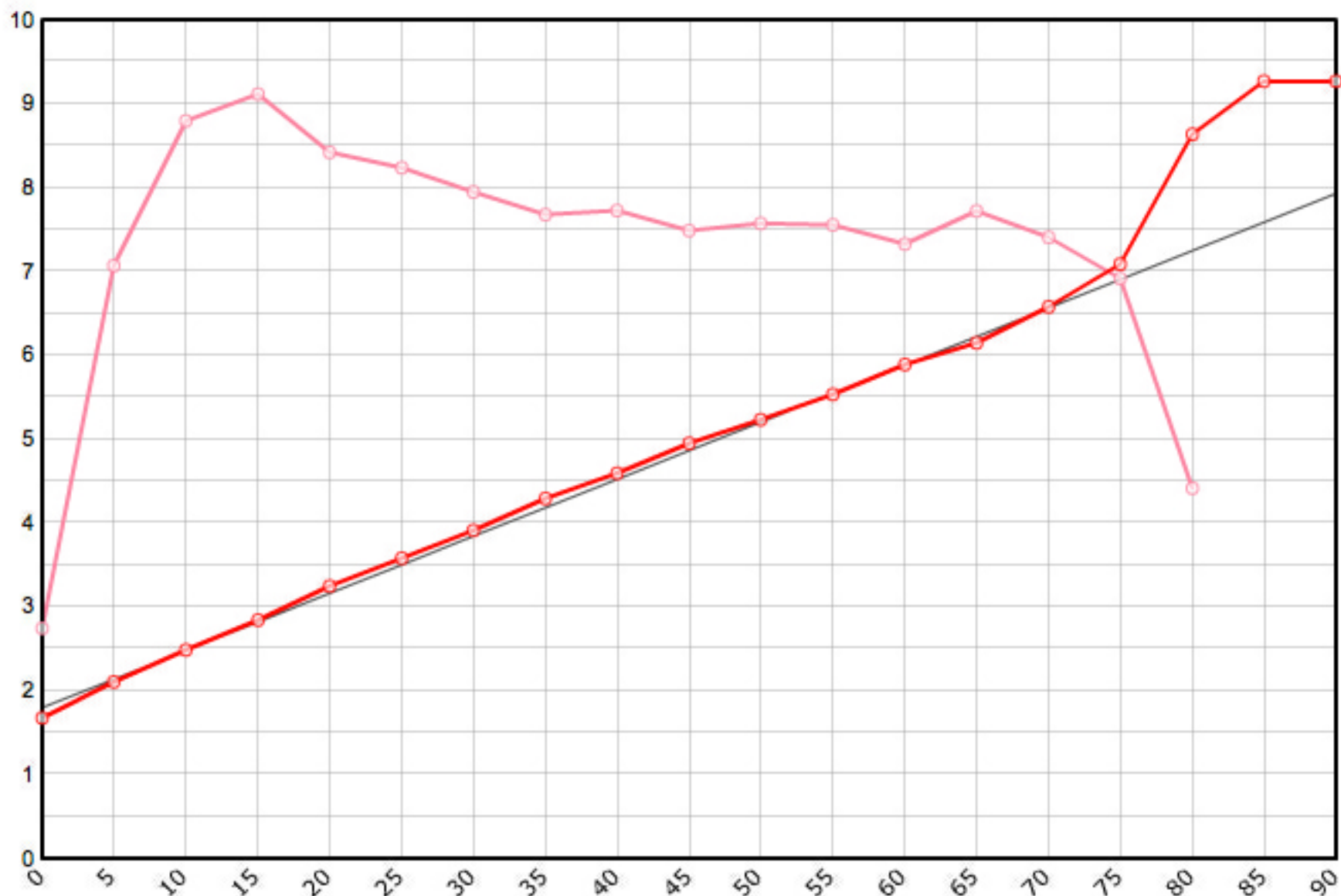


Rutenbauer	Modell	Rutenart	Bauart	Länge	Klasse	Teile	LWV	RAV	MP10%	MP60%	SM10%	SM60%	Info
Payne Jim	Nr. 198	Einhandrute	Solid Hex	7' 6"	4	3	0.071	0.268	9.0	54.0	2.4130	5.4762	<input checked="" type="checkbox"/>

Schnurgewicht		Wurfdistanz		Spitzenring		Impactfaktor	Tip Impact		Hülse	Hülse 1		Hülse 2		Hülse 3		Bambusdichte		
0.00076	oz/inch	50	ft.	4.5/64"	0.01600	oz	4.000	1.893	oz	Standard	10/64"	0.162	oz	15/64"	0.358	oz	0.668	oz/inch3



MP	Solid Hex	Taper	Diff.	Stress
0	0.066	1.676	0.000	54'858
5	0.083	2.108	0.432	141'369
10	0.098	2.489	0.381	175'964
15	0.112	2.845	0.356	182'274
20	0.128	3.251	0.406	168'459
25	0.141	3.581	0.330	164'771
30	0.154	3.912	0.330	159'006
35	0.169	4.293	0.381	153'560
40	0.181	4.597	0.305	154'478
45	0.195	4.953	0.356	149'787
50	0.206	5.232	0.279	151'477
55	0.218	5.537	0.305	151'108
60	0.232	5.893	0.356	146'588
65	0.242	6.147	0.254	154'369
70	0.259	6.579	0.432	148'168
75	0.279	7.087	0.508	138'295
80	0.340	8.636	1.549	88'357
85	0.365	9.271	0.635	
90	0.365	9.271	0.000	

