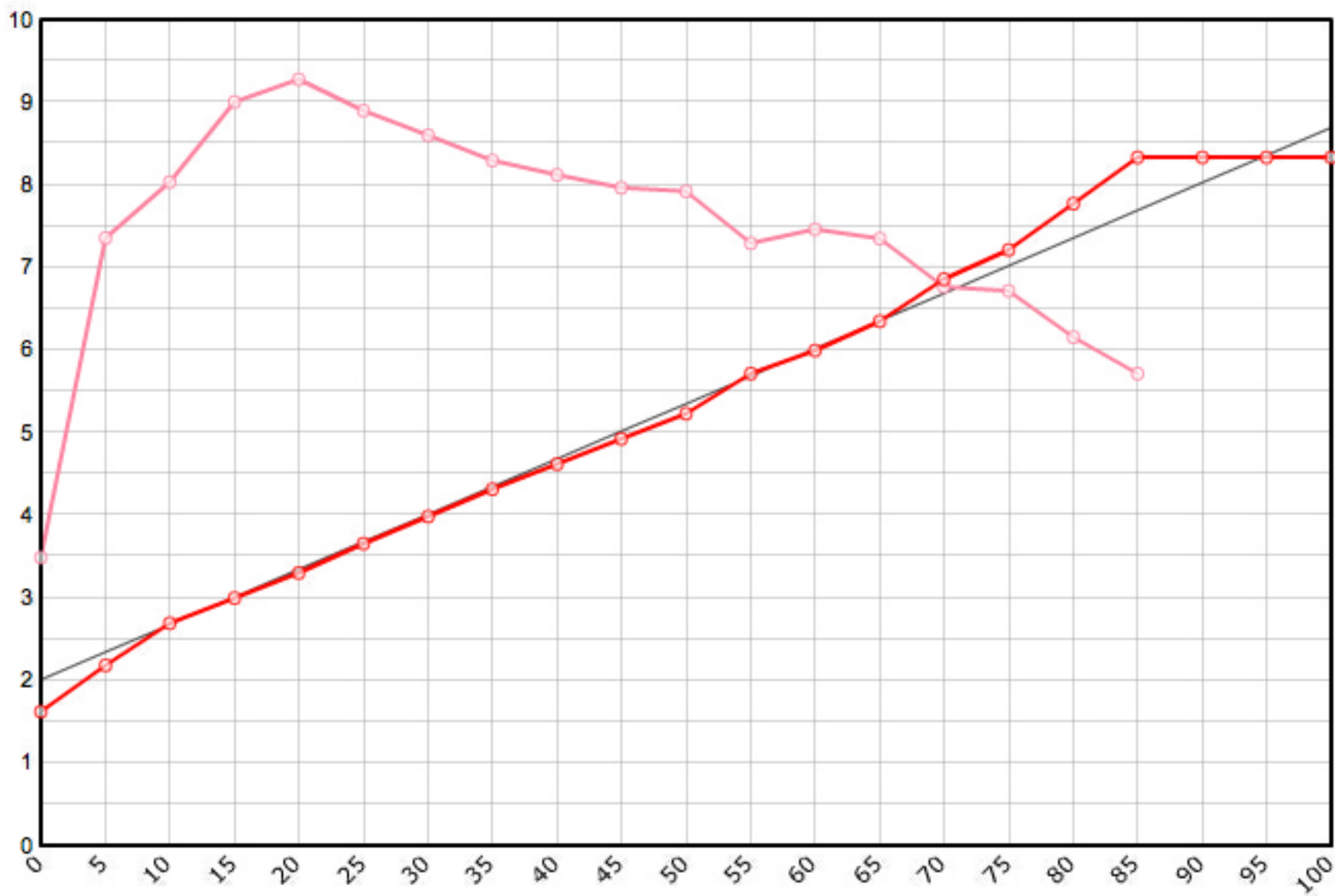


Rutenbauer	Modell	Rutenart	Bauart	Länge	Klasse	Teile	LWV	RAV	MP10%	MP60%	SM10%	SM60%	Info
Payne Jim	Nr. 102	Einhandrute	Solid Hex	8 ' 0 "	5	2	0.079	0.263	9.6	57.6	2.6518	5.8603	✓

Schnurgewicht		Wurfdistanz		Spitzenring		Impactfaktor	Tip Impact	Hülstentyp	Hülse 1		Hülse 2		Hülse 3		Bambusdichte		
0.00089	oz/inch	50	ft.	4.5/64"	0.01600	oz	4.000	2.197	oz	Standard	13/64"	0.271	oz		oz	0.668	oz/inch3



MP	Solid Hex	Taper	Diff.	Stress
0	0.064	1.626	0.000	69'851
5	0.086	2.184	0.559	147'118
10	0.106	2.692	0.508	160'758
15	0.118	2.997	0.305	180'042
20	0.130	3.302	0.305	185'539
25	0.144	3.658	0.356	177'932
30	0.157	3.988	0.330	172'021
35	0.170	4.318	0.330	165'936
40	0.182	4.623	0.305	162'467
45	0.194	4.928	0.305	159'380
50	0.206	5.232	0.305	158'423
55	0.225	5.715	0.483	145'851
60	0.236	5.994	0.279	149'315
65	0.250	6.350	0.356	147'066
70	0.270	6.858	0.508	135'362
75	0.284	7.214	0.356	134'284
80	0.306	7.772	0.559	123'117
85	0.328	8.331	0.559	114'340
90	0.328	8.331	0.000	
95	0.328	8.331	0.000	
100	0.328	8.331	0.000	

