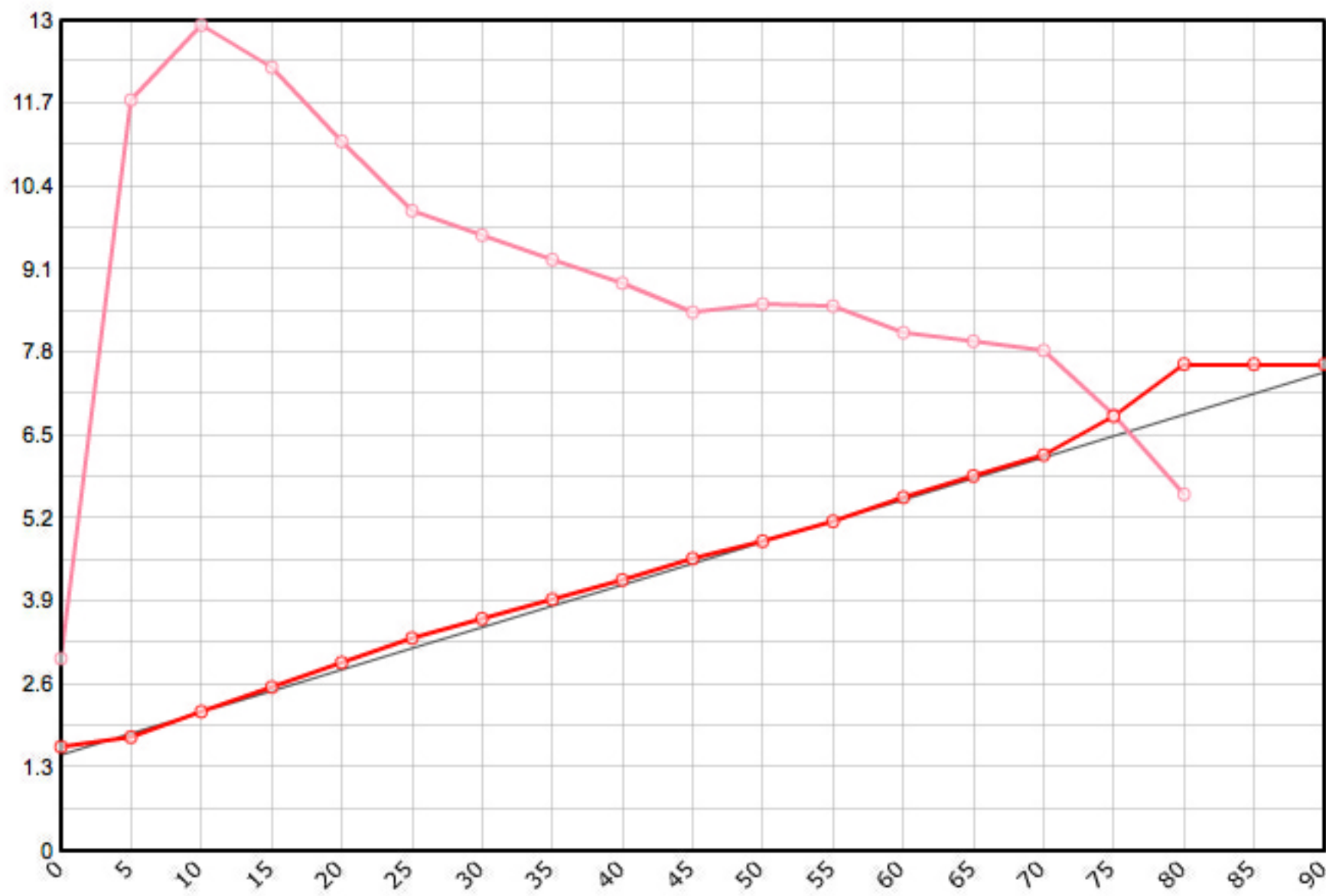


Rutenbauer	Modell	Rutenart	Bauart	Länge	Klasse	Teile	LWV	RAV	MP10%	MP60%	SM10%	SM60%	Info
Payne Jim	Nr. 100	Einhandrute	Solid Hex	7' 6"	4	2	0.059	0.262	9.0	54.0	2.1031	5.0952	✓

Schnurgewicht		Wurfdistanz		Spitzenring		Impactfaktor	Tip Impact		Hülstentyp	Hülse 1		Hülse 2		Hülse 3		Bambusdichte		
0.00076	oz/inch	50	ft.	4.5/64"	0.01600	oz	4.000	1.893	oz	Standard	12/64"	0.225	oz			oz	0.668	oz/inch3



MP	Solid Hex	Taper	Diff.	Stress
0	0.064	1.626	0.000	60'163
5	0.070	1.778	0.152	235'107
10	0.086	2.184	0.406	258'475
15	0.101	2.565	0.381	245'356
20	0.116	2.946	0.381	222'146
25	0.131	3.327	0.381	200'507
30	0.143	3.632	0.305	192'747
35	0.155	3.937	0.305	185'159
40	0.167	4.242	0.305	177'696
45	0.180	4.572	0.330	168'582
50	0.191	4.851	0.279	171'133
55	0.203	5.156	0.305	170'539
60	0.218	5.537	0.381	162'297
65	0.231	5.867	0.330	159'494
70	0.244	6.198	0.330	156'738
75	0.268	6.807	0.610	136'487
80	0.300	7.620	0.813	111'599
85	0.300	7.620	0.000	
90	0.300	7.620	0.000	

