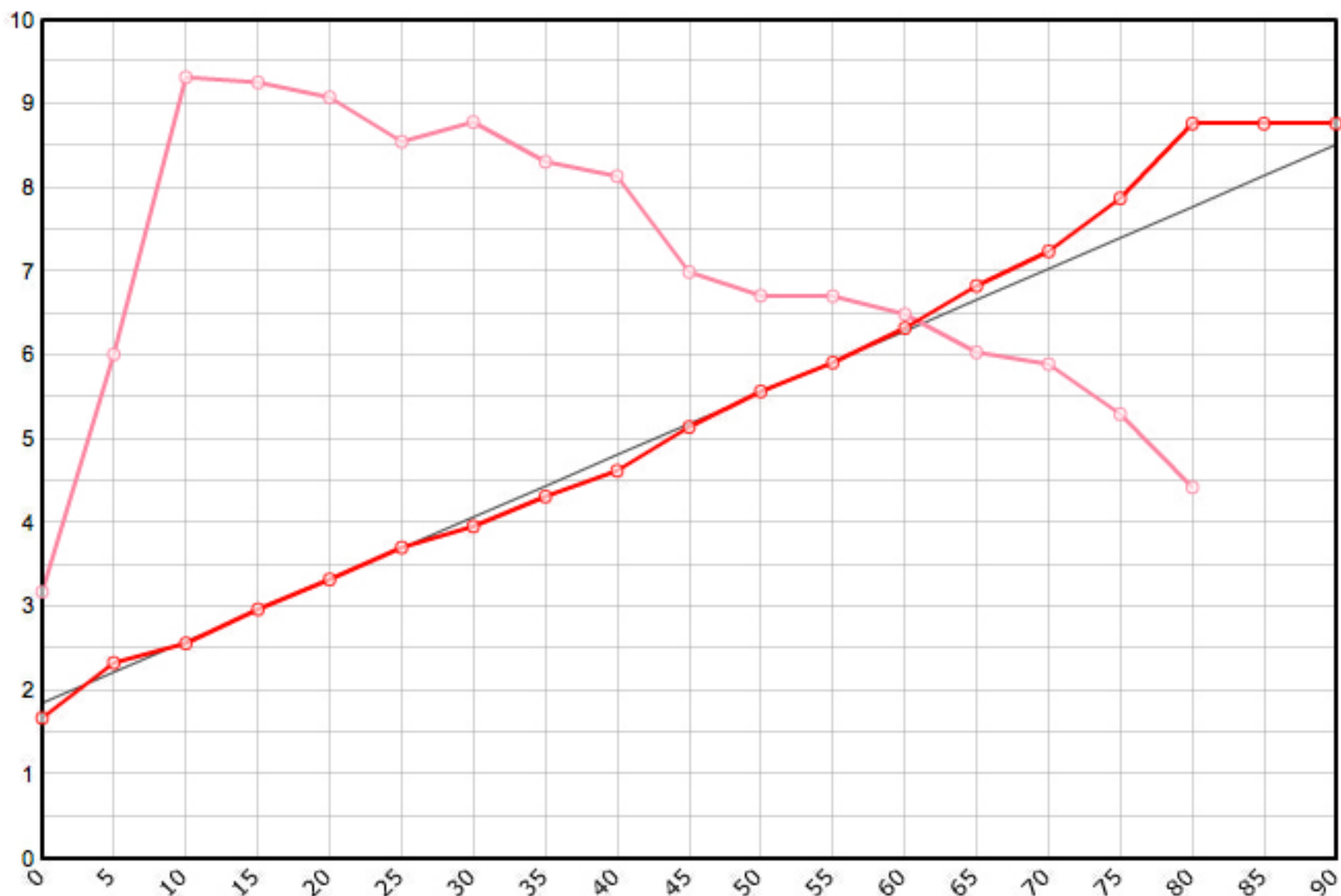


Rutenbauer	Modell	Rutenart	Bauart	Länge	Klasse	Teile	LWV	RAV	MP10%	MP60%	SM10%	SM60%	Info
Payne Jim	Nr. 100H	Einhandrute	Solid Hex	7' 6"	5	2	0.073	0.291	9.0	54.0	2.5197	5.8486	<input checked="" type="checkbox"/>

Schnurgewicht		Wurfdistanz		Spitzenring		Impactfaktor	Tip Impact	Hülse typ	Hülse 1		Hülse 2		Hülse 3		Bambusdichte				
0.00089	oz/inch	50	ft.	4.5/64"	0.01600	oz	4.000	2.197	oz	Standard	13/64"	0.271	oz		oz		oz	0.668	oz/inch3



MP	Solid Hex	Taper	Diff.	Stress
0	0.066	1.676	0.000	63'692
5	0.092	2.337	0.660	120'325
10	0.101	2.565	0.229	186'345
15	0.117	2.972	0.406	185'119
20	0.131	3.327	0.356	181'624
25	0.146	3.708	0.381	170'974
30	0.156	3.962	0.254	175'637
35	0.170	4.318	0.356	166'207
40	0.182	4.623	0.305	162'724
45	0.203	5.149	0.526	139'970
50	0.219	5.570	0.422	134'267
55	0.233	5.918	0.348	134'151
60	0.249	6.325	0.406	129'859
65	0.269	6.833	0.508	120'715
70	0.285	7.239	0.406	117'937
75	0.310	7.874	0.635	106'088
80	0.345	8.763	0.889	88'605
85	0.345	8.763	0.000	
90	0.345	8.763	0.000	

