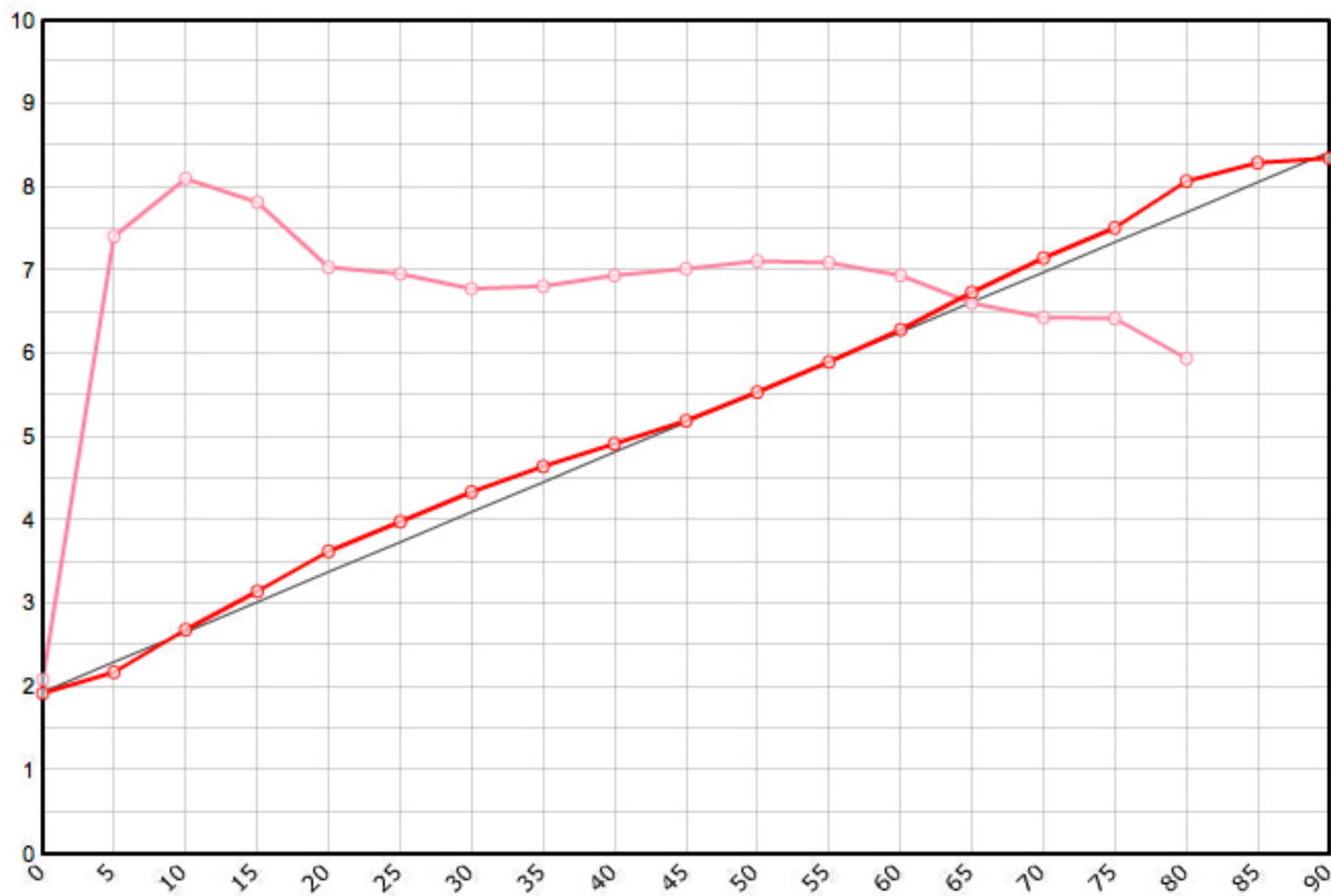


Rutenbauer	Modell	Rutenart	Bauart	Länge	Klasse	Teile	LWV	RAV	MP10%	MP60%	SM10%	SM60%	Info
Neunemann Frank	Typ 2	Einhandrute	Solid Hex	7 ' 6 "	5	2	0.077	0.283	9.0	54.0	2.5908	5.8283	✓

Schnurgewicht		Wurfdistanz		Spitzenring		Impactfaktor	Tip Impact		Hülse	Hülse 1		Hülse 2		Hülse 3		Bambusdichte		
0.00089	oz/inch	50	ft.	5/64"	0.01829	oz	4.000	2.206	oz	Standard	14/64"	0.328	oz			oz	0.668	oz/inch3



MP	Solid Hex	Taper	Diff.	Stress
0	0.076	1.930	0.000	41'887
5	0.086	2.184	0.254	148'166
10	0.106	2.692	0.508	162'003
15	0.124	3.150	0.457	156'414
20	0.143	3.632	0.483	140'790
25	0.157	3.988	0.356	139'177
30	0.171	4.343	0.356	135'621
35	0.183	4.648	0.305	136'244
40	0.194	4.920	0.272	138'789
45	0.205	5.199	0.279	140'431
50	0.218	5.540	0.340	142'282
55	0.232	5.900	0.361	141'839
60	0.248	6.289	0.389	138'795
65	0.265	6.741	0.452	132'248
70	0.282	7.150	0.409	128'765
75	0.296	7.511	0.361	128'439
80	0.318	8.070	0.559	118'899
85	0.326	8.291	0.221	
90	0.329	8.349	0.058	

