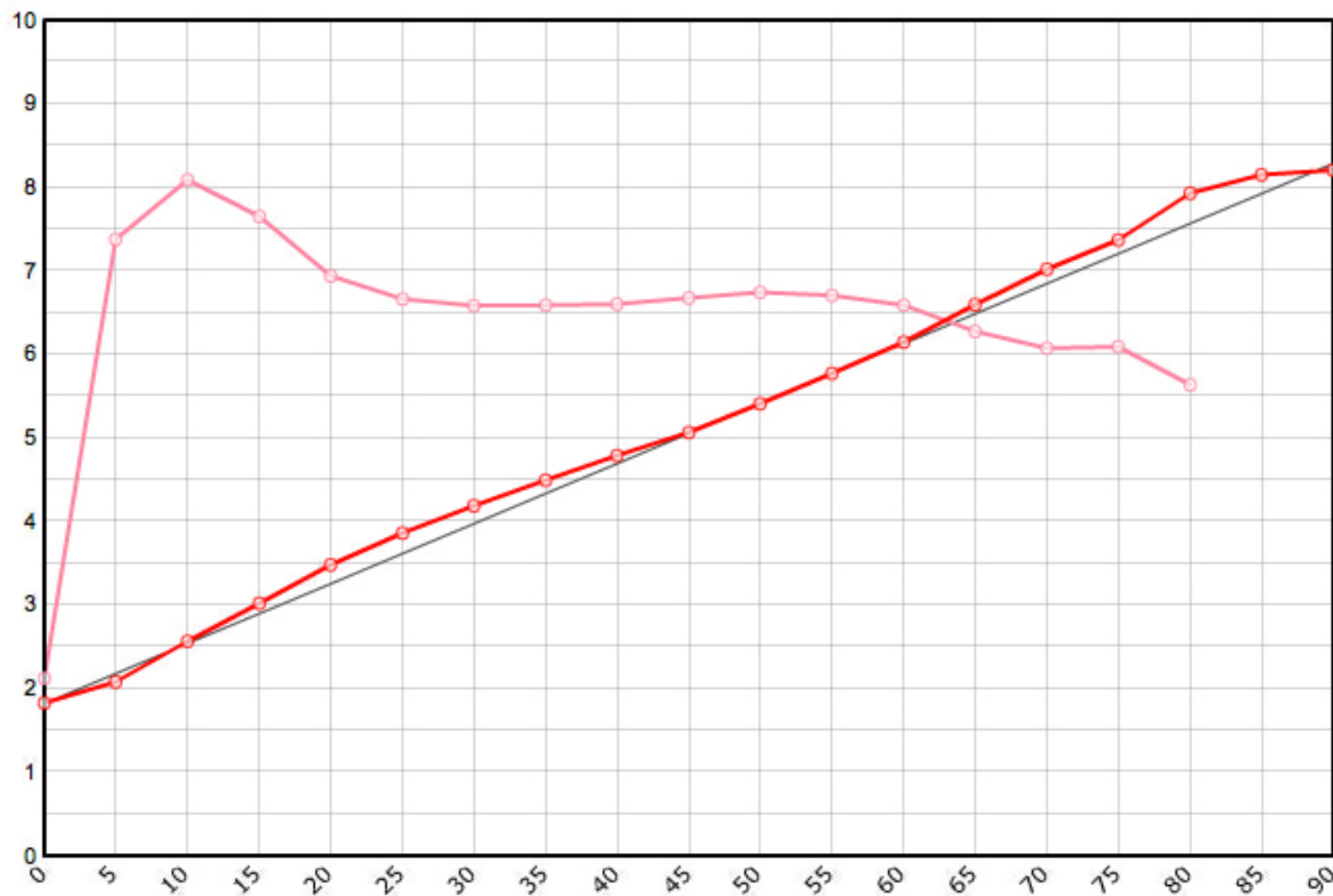


Rutenbauer	Modell	Rutenart	Bauart	Länge	Klasse	Teile	LWV	RAV	MP10%	MP60%	SM10%	SM60%	Info
Neunemann Frank	Typ 2	Einhandrute	Solid Hex	7' 6"	4	2	0.072	0.283	9.0	54.0	2.4689	5.6987	✓

Schnurgewicht		Wurfdistanz		Spitzenring		Impactfaktor	Tip Impact		Hülse	Hülse 1		Hülse 2		Hülse 3		Bambusdichte			
0.00076	oz/inch	50	ft.	5/64"	0.01829	oz	4.000	1.902	oz	Standard	13/64"	0.271	oz		oz		oz	0.668	oz/inch3



MP	Solid Hex	Taper	Diff.	Stress
0	0.072	1.829	0.000	42'459
5	0.082	2.083	0.254	147'527
10	0.101	2.565	0.483	161'794
15	0.119	3.023	0.457	153'120
20	0.137	3.480	0.457	138'781
25	0.152	3.861	0.381	133'331
30	0.165	4.191	0.330	131'642
35	0.177	4.496	0.305	131'774
40	0.189	4.790	0.295	132'044
45	0.200	5.070	0.279	133'553
50	0.213	5.410	0.340	134'870
55	0.227	5.771	0.361	134'196
60	0.242	6.149	0.378	131'778
65	0.260	6.599	0.450	125'534
70	0.276	7.021	0.422	121'509
75	0.290	7.371	0.351	121'821
80	0.312	7.930	0.559	112'729
85	0.321	8.151	0.221	
90	0.323	8.209	0.058	

