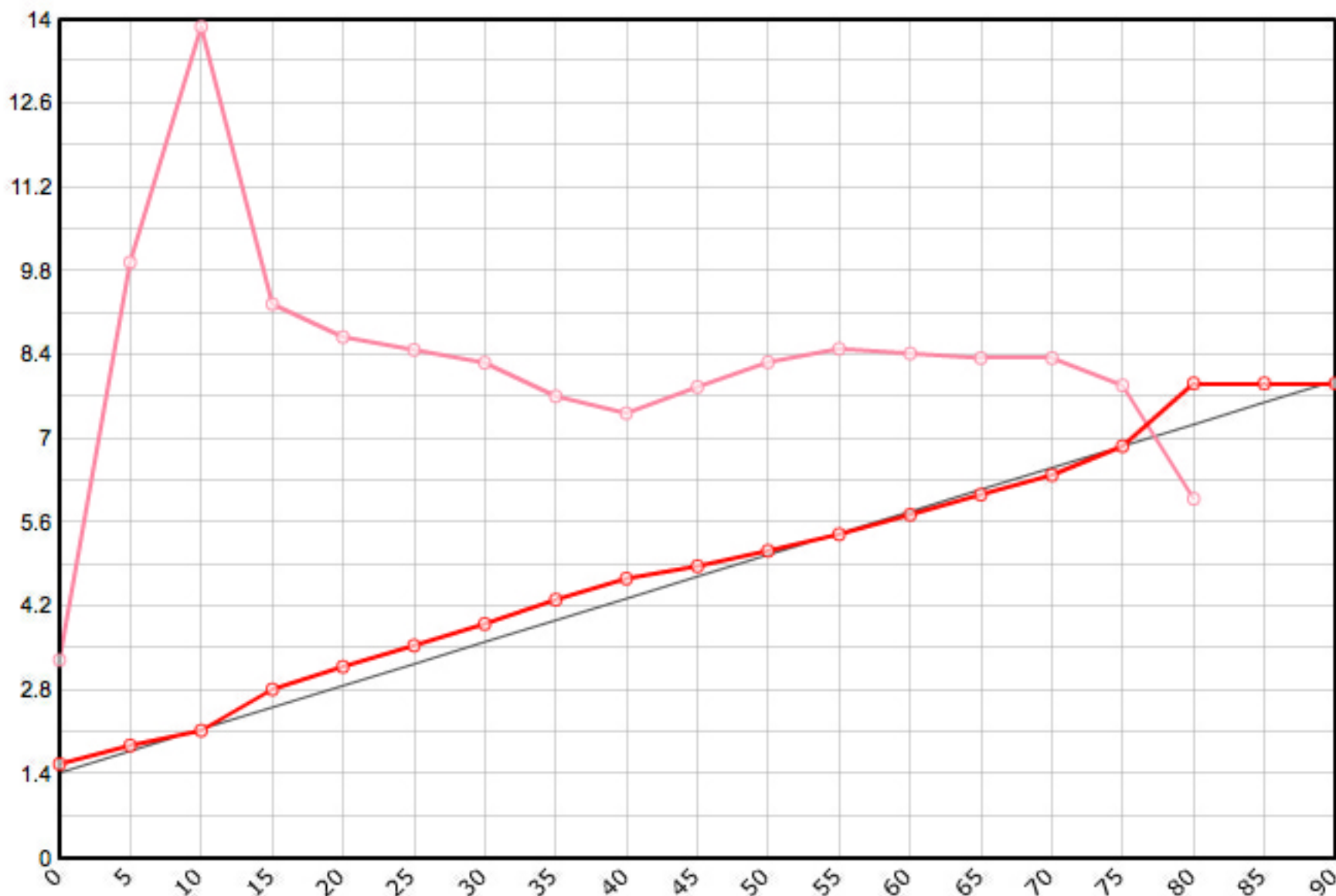


Rutenbauer	Modell	Rutenart	Bauart	Länge	Klasse	Teile	LWV	RAV	MP10%	MP60%	SM10%	SM60%	Info
Milward	Pack Rod	Einhandrute	Solid Hex	7' 6"	4	4	0.056	0.286	9.0	54.0	2.0828	5.3543	✓

Schnurgewicht		Wurfdistanz		Spitzenring		Impactfaktor	Tip Impact		Hülse	Hülse 1		Hülse 2		Hülse 3		Bambusdichte					
0.00076	oz/inch	50	ft.	4/64"	0.01600	oz	4.000	1.893	oz	Standard	9/64"	0.135	oz	13/64"	0.271	oz	16/64"	0.397	oz	0.668	oz/inch ³



MP	Solid Hex	Taper	Diff.	Stress
0	0.062	1.575	0.000	66'175
5	0.074	1.880	0.305	199'009
10	0.084	2.134	0.254	277'621
15	0.111	2.819	0.686	185'113
20	0.126	3.200	0.381	174'060
25	0.140	3.556	0.356	169'700
30	0.154	3.912	0.356	165'507
35	0.170	4.318	0.406	154'270
40	0.184	4.674	0.356	148'634
45	0.192	4.877	0.203	157'395
50	0.202	5.131	0.254	165'701
55	0.213	5.410	0.279	170'178
60	0.226	5.740	0.330	168'574
65	0.239	6.071	0.330	166'918
70	0.252	6.401	0.330	167'024
75	0.271	6.883	0.483	157'830
80	0.312	7.925	1.041	120'067
85	0.312	7.925	0.000	
90	0.312	7.925	0.000	

