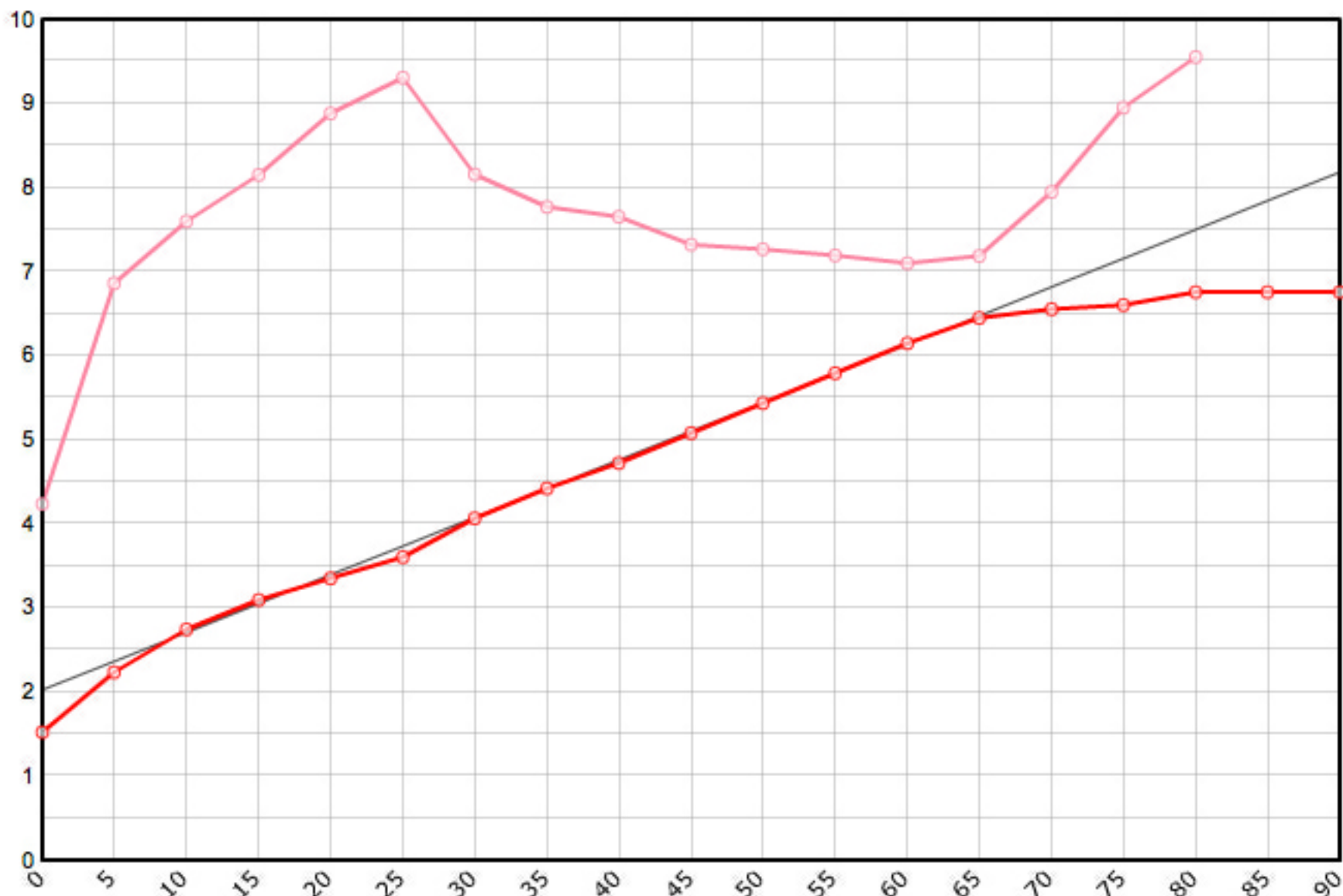


Rutenbauer	Modell	Rutenart	Bauart	Länge	Klasse	Teile	LWV	RAV	MP10%	MP60%	SM10%	SM60%	Info
Marinaro Vincent	7605 (Maxwell rod)	Einhandrute	Solid Hex	7' 6"	5	2	0.080	0.269	9.0	54.0	2.6416	5.7201	✓

Schnurgewicht		Wurfdistanz		Spitzenring		Impactfaktor	Tip Impact	Hülse	Hülse 1		Hülse 2		Hülse 3		Bambusdichte		
0.00089	oz/inch	50	ft.	4/64"	0.01600	oz	4.000	2.197	oz	Standard	13/64"	0.271	oz		oz	0.668	oz/inch3



MP	Solid Hex	Taper	Diff.	Stress
0	0.060	1.524	0.000	84'774
5	0.088	2.235	0.711	137'220
10	0.108	2.743	0.508	151'965
15	0.122	3.099	0.356	163'038
20	0.132	3.353	0.254	177'621
25	0.142	3.607	0.254	186'169
30	0.160	4.064	0.457	163'148
35	0.174	4.420	0.356	155'456
40	0.186	4.724	0.305	153'063
45	0.200	5.080	0.356	146'469
50	0.214	5.436	0.356	145'278
55	0.228	5.791	0.356	143'878
60	0.242	6.147	0.356	142'010
65	0.254	6.452	0.305	143'719
70	0.258	6.553	0.102	158'916
75	0.260	6.604	0.051	178'965
80	0.266	6.756	0.152	191'027
85	0.266	6.756	0.000	
90	0.266	6.756	0.000	

