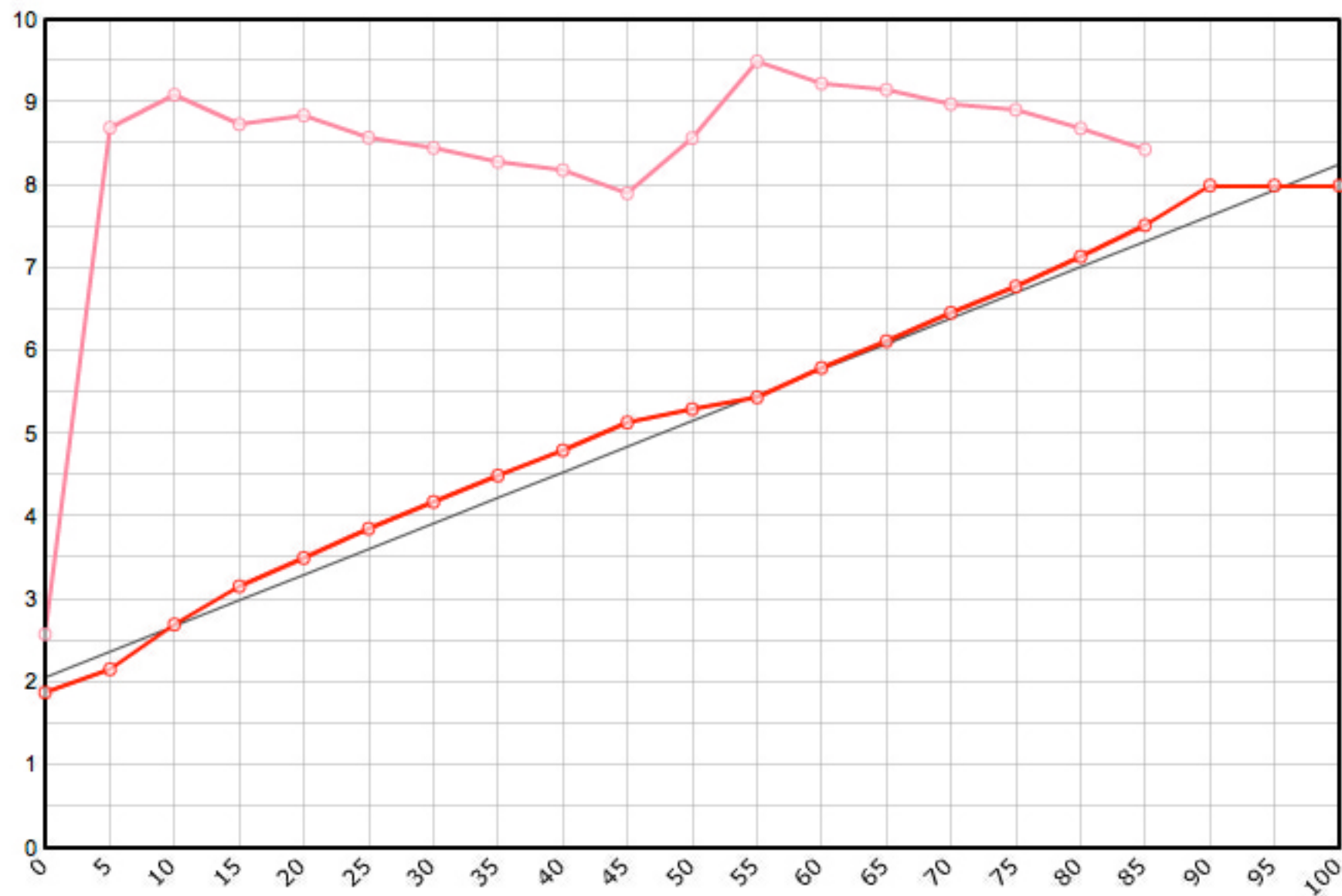


Rutenbauer	Modell	Rutenart	Bauart	Länge	Klasse	Teile	LWV	RAV	MP10%	MP60%	SM10%	SM60%	Info
Henseler Günter	Typ "Elv"	Einhandrute	Solid Hex	8 ' 0 "	6	2	0.081	0.244	9.6	57.6	2.6568	5.6272	

Schnurgewicht		Wurfdistanz		Spitzenring		Impactfaktor	Tip Impact	Hülse	Hülse 1		Hülse 2		Hülse 3		Bambusdichte		
0.00102	oz/inch	50	ft.	5/64"	0.01829	oz	4.000	2.511	oz	Standard	14/64"	0.328	oz		oz	0.668	oz/inch3



MP	Solid Hex	Taper	Diff.	Stress
0	1.880	1.880	0.000	51'610
5	2.160	2.160	0.280	173'878
10	2.700	2.700	0.540	181'794
15	3.160	3.160	0.460	174'739
20	3.500	3.500	0.340	176'893
25	3.860	3.860	0.360	171'563
30	4.180	4.180	0.320	169'038
35	4.500	4.500	0.320	165'632
40	4.800	4.800	0.300	163'687
45	5.140	5.140	0.340	158'055
50	5.300	5.300	0.160	171'391
55	5.440	5.440	0.140	189'909
60	5.800	5.800	0.360	184'570
65	6.120	6.120	0.320	183'132
70	6.460	6.460	0.340	179'596
75	6.780	6.780	0.320	178'195
80	7.140	7.140	0.360	173'728
85	7.520	7.520	0.380	168'676
90	8.000	8.000	0.480	
95	8.000	8.000	0.000	
100	8.000	8.000	0.000	

