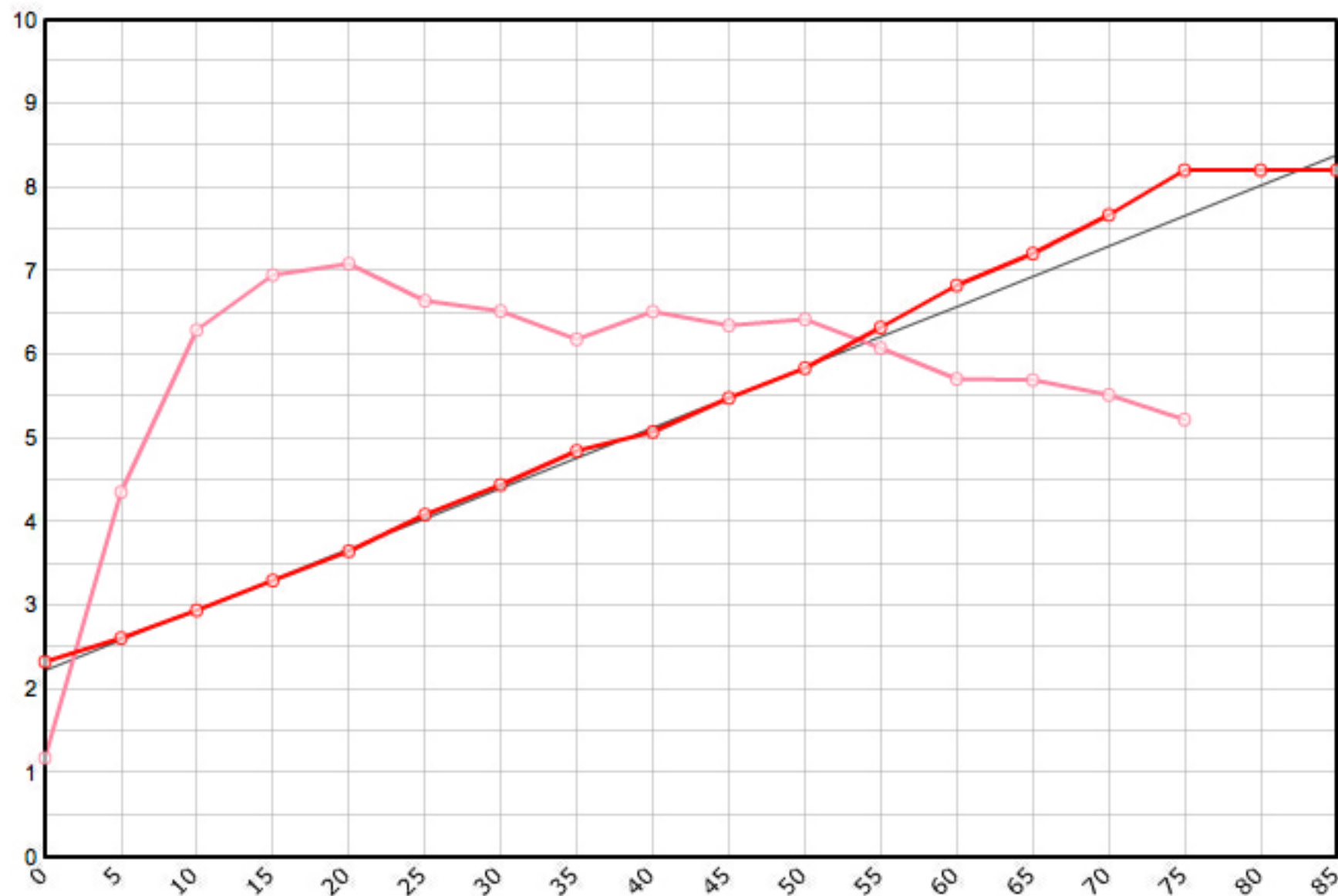


Rutenbauer	Modell	Rutenart	Bauart	Länge	Klasse	Teile	LWV	RAV	MP10%	MP60%	SM10%	SM60%	Info
Farlow	Norm Thompson	Einhandrute	Solid Hex	7' 0"	5	2	0.088	0.285	8.4	50.4	2.8407	5.8806	✓

Schnurgewicht		Wurfdistanz		Spitzenring		Impactfaktor	Tip Impact	Hülstentyp	Hülse 1		Hülse 2		Hülse 3		Bambusdichte		
0.00089	oz/inch	50	ft.	6/64"	0.02057	oz	4.000	2.216	oz	Standard	14/64"	0.328	oz		oz	0.668	oz/inch3



MP	Solid Hex	Taper	Diff.	Stress
0	0.092	2.337	0.000	23'711
5	0.103	2.616	0.279	87'224
10	0.116	2.946	0.330	125'905
15	0.130	3.302	0.356	139'014
20	0.144	3.658	0.356	141'731
25	0.161	4.089	0.432	132'927
30	0.175	4.445	0.356	130'511
35	0.191	4.851	0.406	123'746
40	0.200	5.080	0.229	130'396
45	0.216	5.486	0.406	127'061
50	0.230	5.842	0.356	128'449
55	0.249	6.325	0.483	121'667
60	0.269	6.833	0.508	114'281
65	0.284	7.214	0.381	114'045
70	0.302	7.671	0.457	110'371
75	0.323	8.204	0.533	104'519
80	0.323	8.204	0.000	
85	0.323	8.204	0.000	

