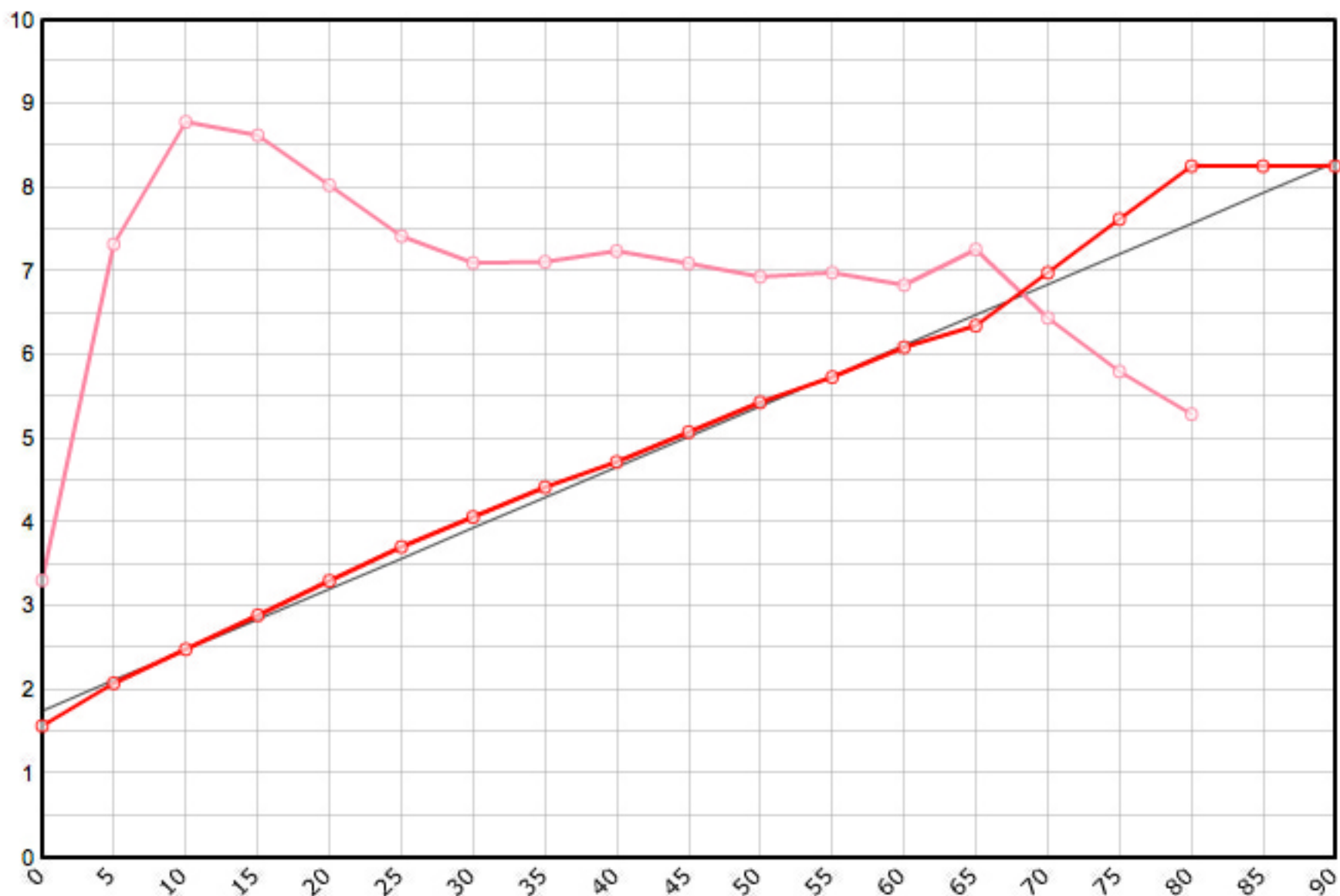


Rutenbauer	Modell	Rutenart	Bauart	Länge	Klasse	Teile	LWV	RAV	MP10%	MP60%	SM10%	SM60%	Info
Bogart Chris	Shenandoah Supreme	Einhandrute	Solid Hex	7' 6"	4	3	0.069	0.286	9.0	54.0	2.4079	5.6794	✓

Schnurgewicht		Wurfdistanz		Spitzenring		Impactfaktor	Tip Impact	Hülse typ	Hülse 1		Hülse 2		Hülse 3		Bambusdichte						
0.00076	oz/inch	50	ft.	4/64"	0.01600	oz	4.000	1.893	oz	Standard	11/64"	0.194	oz	16/64"	0.397	oz			oz	0.668	oz/inch ³



MP	Solid Hex	Taper	Diff.	Stress
0	0.062	1.575	0.000	66'175
5	0.082	2.083	0.508	146'423
10	0.098	2.489	0.406	175'646
15	0.114	2.896	0.406	172'524
20	0.130	3.302	0.406	160'586
25	0.146	3.708	0.406	148'365
30	0.160	4.064	0.356	141'977
35	0.174	4.420	0.356	142'211
40	0.186	4.724	0.305	144'835
45	0.200	5.080	0.356	141'941
50	0.214	5.436	0.356	138'669
55	0.226	5.740	0.305	139'632
60	0.240	6.096	0.356	136'714
65	0.250	6.350	0.254	145'200
70	0.275	6.985	0.635	128'816
75	0.300	7.620	0.635	116'145
80	0.325	8.255	0.635	105'946
85	0.325	8.255	0.000	
90	0.325	8.255	0.000	

